

**Head Office:**  
Dixon Kelley Estate Agents  
1 Penn Court  
Station Road, West Moors  
Dorset. BH22 0JJ

# DORSET PARK HOMES

**DRAFT**

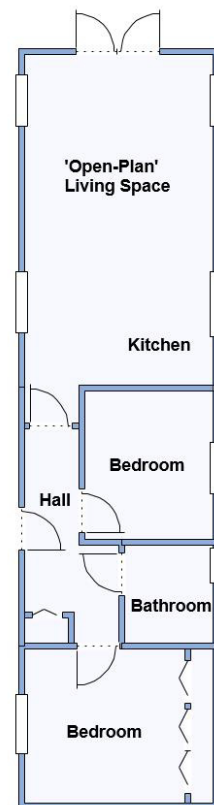
[www.dorsetparkhomes.com](http://www.dorsetparkhomes.com)

**Telephone: 01202 877511**

**90 The Avenue, Oaktree Park, St Leonards, Ringwood. BH24 2RJ**



**New Home—High Quality Finish Throughout**



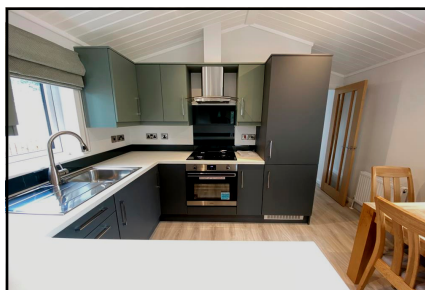
This drawing has been prepared for diagrammatic purpose only. Not to scale.

## 2-Bedroom Park Home - approx 45' x 12'

Accommodation & approximate room dimensions:

- Oakgrove 'Oakdale' 2024
- Hall: Boiler cupboard housing combination boiler.
- 'Open-Plan' Living Space: approx 19'4" x 10'8". A bright room with vaulted ceiling. Feature fireplace. Double doors to raised terrace.
- Kitchen Area: Range of floor & wall cupboards. Built-in oven, hob cooker hood. Integrated washing machine & fridge/freezer.
- Bedroom 1: approx 9' x 8'9" PLUS fitted wardrobes.
- Bedroom 2: approx 8'8" x 7'6".
- Bathroom: Panelled bath with shower over & screen fitted. Vanity wash basin & WC. Chrome towel rail.
- Gas Central Heating (system untested)
- PVCu Double-Glazing & LED Lighting
- Vaulted Ceilings & Oak Doors
- Stylish Interior Design & Fully Furnished
- Garden with Raised Terrace & Lawn. Metal Shed.
- Parking on Plot
- Age Restriction 50+ Pets Considered
- Popular, well maintained Residential Park with active Members Club.

## Popular 'Pet Friendly' Park



**Price: £169,950**

**Pitch Fee: approx £250 per month**

**Subject to Annual Review**

**Council Tax Band: 'A'**

**Tenure: 1983 Mobile Homes Act Agreement**

**VIEWING STRICTLY BY APPOINTMENT WITH THE VENDOR'S AGENT Dorset Park Homes 01202 877511**

**IMPORTANT NOTE:** These particulars are believed to be correct but their accuracy is not guaranteed. They do not form part of any contract. Nothing in these particulars shall be deemed to be a statement that the property is in good structural condition or otherwise, nor that any of the services, appliances, equipment or facilities are in good working order or have been tested. Purchasers should satisfy themselves on such matters prior to purchase Ref.W04861

*The recommended specialist in Park Home sales*  
Partner: Simon Dixon

